




Vivaldi

Collection(s)	Lombardi Collection, Vivaldi
Colour(s)	Blush, Copper, Duckegg, Forest, Ivory, Navy, Onyx, Pewter, Sand, Scarlet, Tahini, Teal
Product Type(s)	Heavy Commercial
Attributes	Halo Easy Care, Oekotex 100
Styles	Classic, Eclectic, Florals & Botanical, Velvet and Soft Touch
Composition	100% Polyester
Pattern Match	Yes
Pattern Repeat (cm)	Horizontal: 50cm, Vertical: 50cm
Railroaded	No
Width (cm)	142CM
Roll Size (approx)	40m
Weight (gsm)	400.0
Stain Repellent	No
FIAA Care Label	Label 1 - Pile Fabrics, Velvets & Chenille Wovens
Usage	 Upholstery  Cushion  Lamp Shade
Guarantee	3 Years in accordance with our product type and care instructions

Test Results

Wyzenbeek (ASTM D3597, mesh, 4lb/3lb)	100,000 Cycles
AS/NZ 3837	No
Seam Slippage (ISO 13936-2, Load 180)	Warp .0, Weft .0
Piling Resist (ISO 12945-2)	5
Colourfastness to Light Xenon arc (ISO 105-B02, blue std 6)	>6
Colourfastness to Rubbing (ISO 105-X12)	Dry 4/5, Wet 4/5
Free and Hydrolysed Formaldehyde	Not detectable
Flammability AS/NZS 1530.3 - 1999	
Ignitability (0-20)	11
Spread of Flame (0-10)	0
Heat Involved (0-10)	2
Smoke Developed (0-10)	4
Oekotex Standard 100	SHKO 062867 TESTEX
Quality Management System ISO9001	No

Vivaldi



Blush



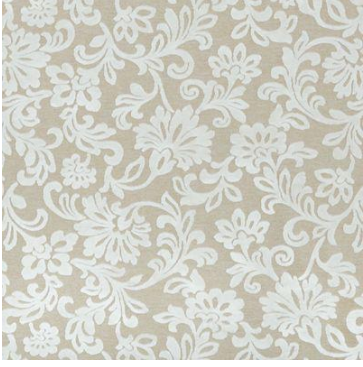
Copper



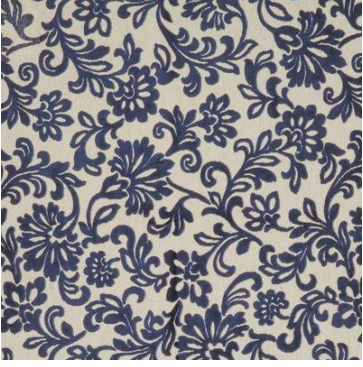
Duckegg



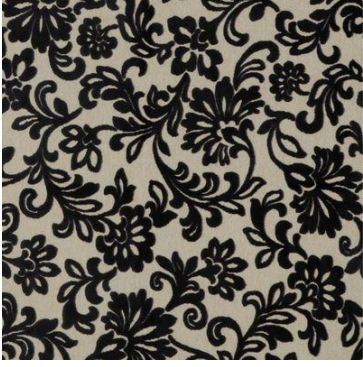
Forest



Ivory



Navy



Onyx



Pewter



Sand



Scarlet



Tahini



Teal