



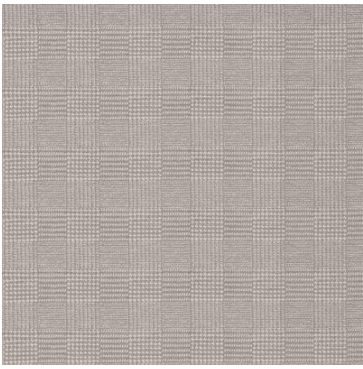
Terrain

| | |
|---------------------|--|
| Collection(s) | Terrain Collection |
| Colour(s) | Ash, Cocoa, Coconut, Jungle, Midnight, Tawny, Zebra |
| Product Type(s) | Heavy Commercial |
| Attributes | Halo Easy Care, Oekotex 100 |
| Styles | Contemporary, Eclectic, Global, Modern |
| Composition | 100% Polyester |
| Pattern Match | Yes |
| Pattern Repeat (cm) | Horizontal: 25cm, Vertical: 25cm |
| Railroaded | No |
| Width (cm) | 142CM |
| Roll Size (approx) | 35m |
| Weight (gsm) | 520.0 |
| Stain Repellent | No |
| FIAA Care Label | <u>Label 1 - Pile Fabrics, Velvets & Chenille Wovens</u> |
| Usage |   Upholstery Cushion |
| Guarantee | 3 Years in accordance with our product type and care instructions |

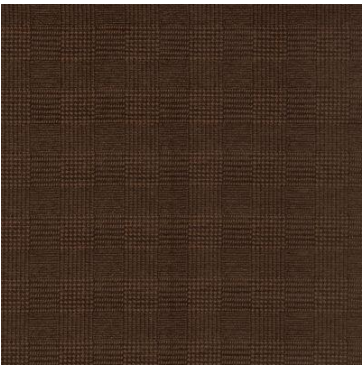
Test Results

| | |
|--|--------------------|
| Martindale (ISO 12947, 12kPA) | 28,000 Cycles |
| AS/NZ 3837 | No |
| Seam Slippage (ISO 13936-2, Load 180) | Warp 1.0, Weft 2.0 |
| Piling Resist (ISO 12945-2) | 4 |
| Colourfastness to Light Xenon arc (ISO 105-B02, blue std 6) | 6 |
| Colourfastness to Rubbing (ISO 105-X12) | Dry 4, Wet 4 |
| Flammability AS/NZS 1530.3 - 1999 | |
| Ignitability (0-20) | 9 |
| Spread of Flame (0-10) | 0 |
| Heat Involved (0-10) | 2 |
| Smoke Developed (0-10) | 5 |
| Oekotex Standard 100 | 13.HCN.35063 |
| Quality Management System ISO9001 | No |

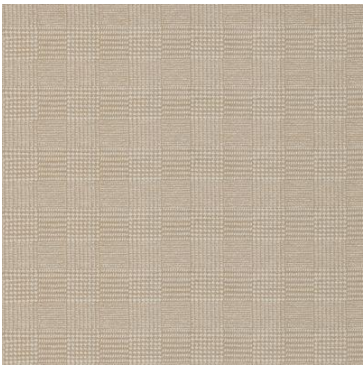
Terrain



Ash



Cocoa



Coconut



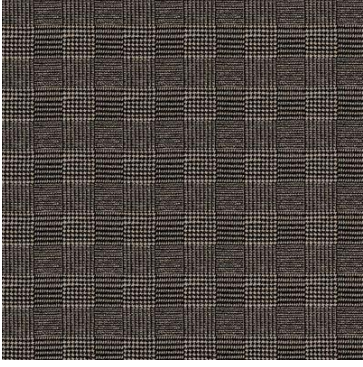
Jungle



Midnight



Tawny



Zebra