

Takla

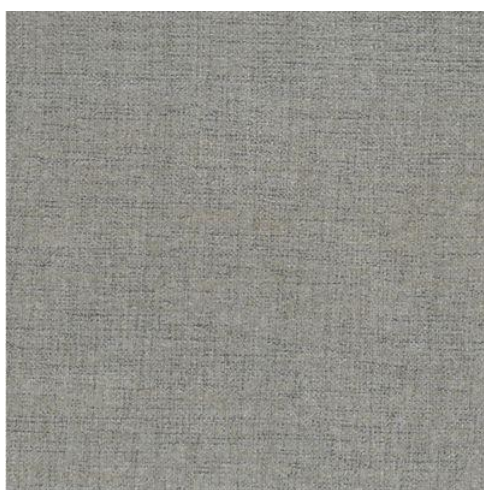
Colour(s)	Birch, Cerulean, Seashell, Serpentine
Product Type(s)	Drapery / General Domestic
Composition	54% Polyester 35% Cotton 11% Linen
Pattern Match	No
Pattern Repeat (cm)	Plain
Railroaded	No
Continuous	No
Self-Weighted	No
Width (cm)	139CM
Roll Size (approx)	
Weight (gsm)	555.0
Stain Repellent	No
FIAA Care Label	Label 1 - Pile Fabrics, Velvets & Chenille Wovens
Guarantee	3 Years in accordance with our product type and care instructions

Test Results

No test results	
-----------------	--



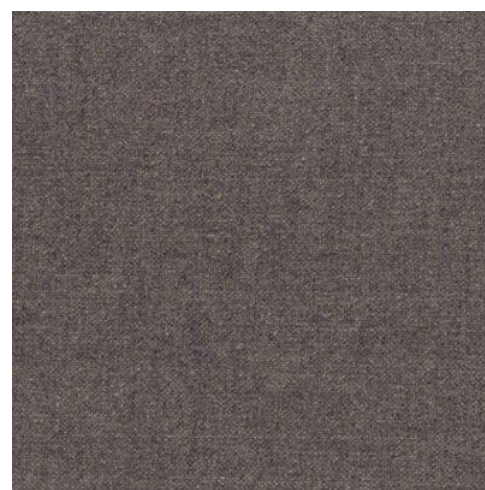
Takla



Birch



Cerulean



Seashell



Serpentine