



Camber

Collection(s)	Camber
Colour(s)	Alabaster, Ash, Chalk, Charcoal, Cloud, Grape, Khaki, Linen, Mink, Moss, Navy, Ocean, Orchid, Papaya, Paprika, Pebble, Petrol, Rouge, Silver, Slate, Steel, Teal, Walnut
Product Type(s)	Heavy Commercial
Attributes	Halo Easy Care, Oekotex 100
Styles	Contemporary, Industrial, Plain, Urban
Composition	100% Polyester
Pattern Match	No
Pattern Repeat (cm)	Plain
Railroaded	No
Width (cm)	140CM
Roll Size (approx)	50m
Weight (gsm)	250.0
Stain Repellent	Warguard
FIAA Care Label	<u>Label 4 - Non Pile Fabric, Soil Resistant Treatment</u>
Usage	  Upholstery Cushion
Guarantee	3 Years in accordance with our product type and care instructions

Test Results

Martindale (ISO 12947, 12kPA)	70,000 Cycles
AS/NZ 3837	No
Seam Slippage (ISO 13936-2, Load 180)	Warp 1.7, Weft 1.6
Piling Resist (ISO 12945-2)	4
Colourfastness to Light Xenon arc (ISO 105-B02, blue std 6)	>6
Flammability AS/NZS 1530.3 - 1999	
Ignitability (0-20)	11
Spread of Flame (0-10)	0
Heat Involved (0-10)	2
Smoke Developed (0-10)	5
Oekotex Standard 100	SH015136790 TESTEX
Quality Management System ISO9001	No



COMMERCIAL TEXTILE ASSOCIATION
OF AUSTRALIA & NEW ZEALAND
LIMITED



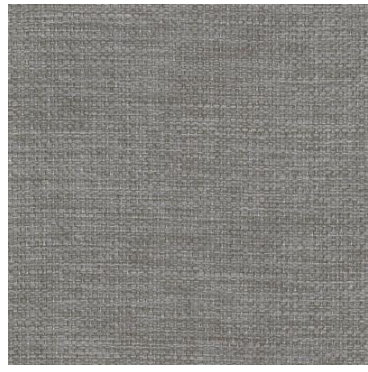
STANDARD
100
SH015136790
TESTEX



Camber



Alabaster



Ash



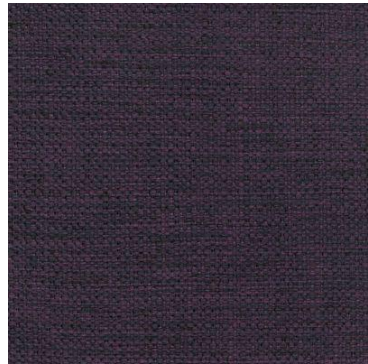
Chalk



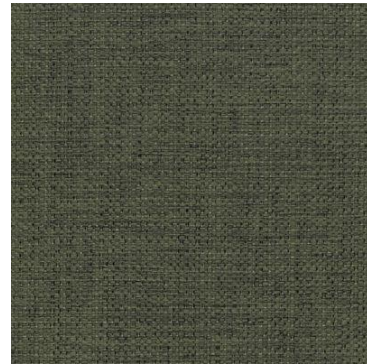
Charcoal



Cloud



Grape



Khaki



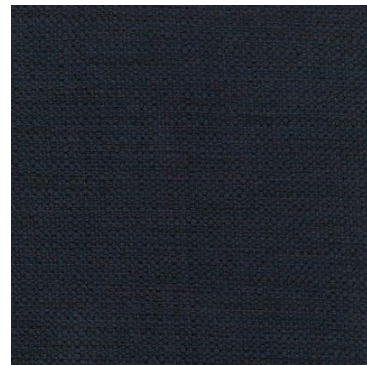
Linen



Mink



Moss



Navy



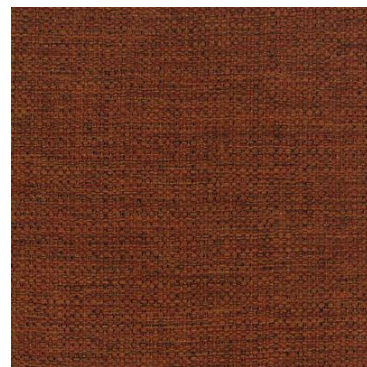
Ocean



Orchid



Papaya



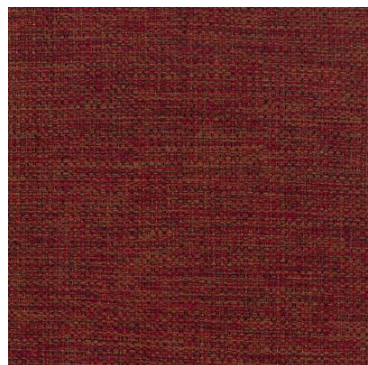
Paprika



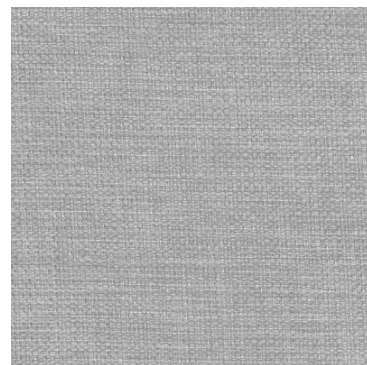
Pebble



Petrol



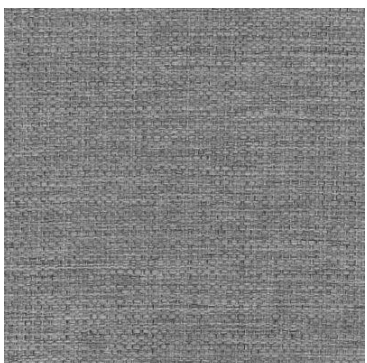
Rouge



Silver



Slate



Steel



Teal



Walnut