
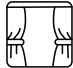




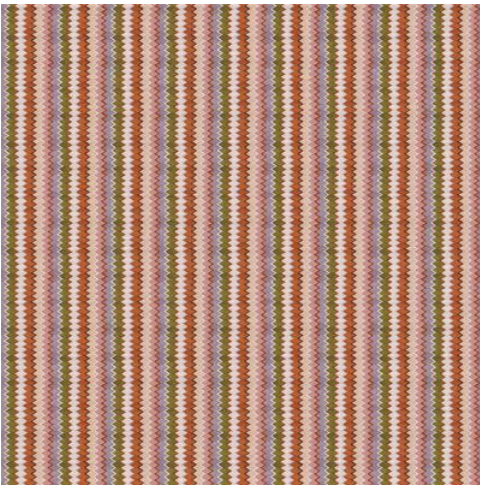
## Boden

Collection(s)	Fiske Collection
Colour(s)	Autumn, Spring, Winter
Product Type(s)	Drapery / General Domestic
Attributes	Oekotex 100
Styles	Contemporary, Eclectic, Florals & Botanical, Rustic
Composition	100% Cotton
Pattern Match	Yes
Pattern Repeat (cm)	Horizontal: 30cm, Vertical: 30cm
Railroaded	No
Continuous	No
Self-Weighted	No
Width (cm)	139CM
Roll Size (approx)	40m
Weight (gsm)	225.0
Stain Repellent	No
FIAA Care Label	<u>Label 3 - Non Pile Fabrics</u>
WCAA Care Label	<u>Label D2 - Cotton / Linen Printed or Dyed</u>
Usage	 Upholstery  Draperies  Cushion  Lamp Shade                 Not suitable for roman blinds
Guarantee	3 Years in accordance with our product type and care instructions

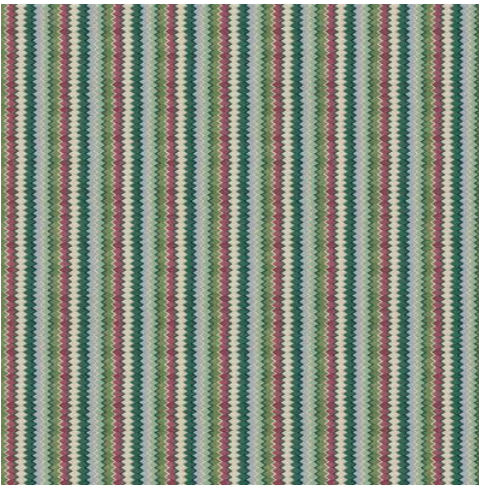
## Test Results

Martindale (ISO 12947, 12kPA)	20,000 Cycles
AS/NZ 3837	No
Seam Slippage (ISO 13936-2, Load 180)	Warp 3.0, Weft 2.0
Piling Resist (ISO 12945-2)	4/5
Colourfastness to Light Xenon arc (ISO 105-B02, blue std 6)	>6
Colourfastness to Rubbing (ISO 105-X12)	Dry 4/5, Wet 4
Dimension Change - Laundering (%) (ISO 5077/ISO 6330. 7BA)	Warp -4.0, Weft -5.0
Dimension Change - Hanging (%) (AS2663.1.B)	Warp .4, Weft .5
Oekotex Standard 100	1705022 CENTEXBEL
Quality Management System ISO9001	No

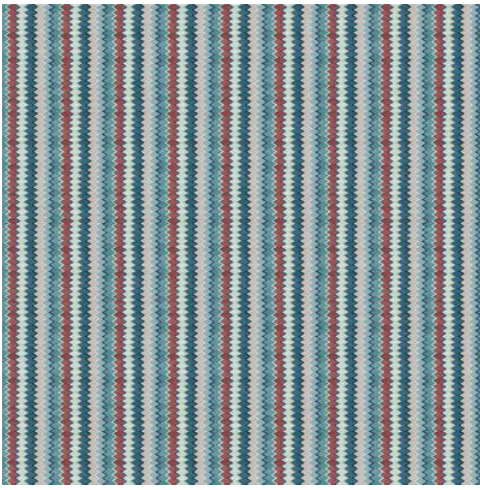
# Boden



Autumn



Spring



Winter