




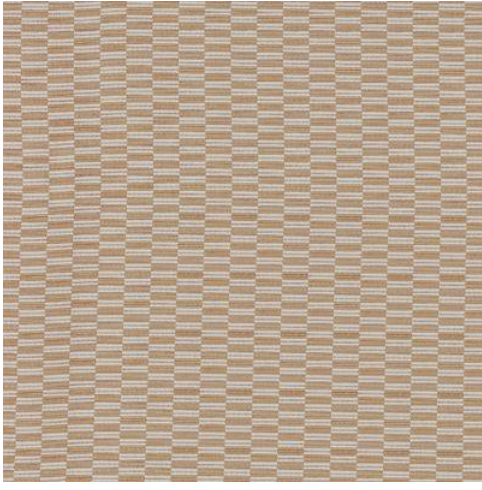
Avela

Collection(s)	Serengeti Collection
Colour(s)	Coral, Moss, Navy, Sand
Product Type(s)	General Domestic
Attributes	Halo Easy Care, Renew / Encore (Recycled), SunDec Outdoor, Oekotex 100
Styles	Geometric, Modern, Urban
Composition	90% Recycled Olefin 10% Polyester
Pattern Match	Yes
Pattern Repeat (cm)	Horizontal: 12cm, Vertical: 11cm
Railroaded	No
Width (cm)	140CM
Roll Size (approx)	35m
Weight (gsm)	506.0
Stain Repellent	No
FIAA Care Label	Label 15 - Sundec
Usage	 Upholstery  Cushion  Lamp Shade
Guarantee	3 Years in accordance with our product type and care instructions

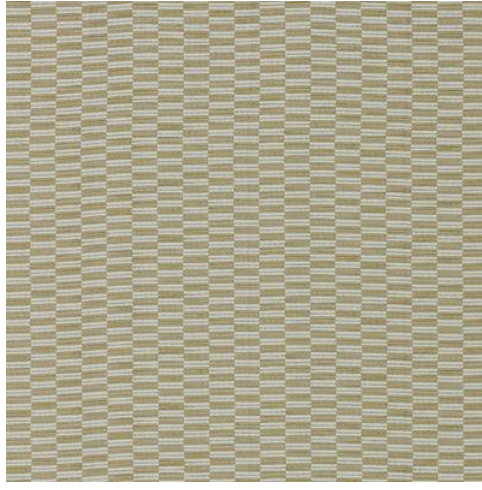
Test Results

Martindale (ISO 12947, 12kPA)	31,500 Cycles
AS/NZ 3837	No
Seam Slippage (ISO 13936-2, Load 180)	Warp .3, Weft .4
Piling Resist (ISO 12945-2)	4-5
Colourfastness to Light Xenon arc (ISO 105-B02, blue std 6)	7
Colourfastness to Rubbing (ISO 105-X12)	Dry 4/5, Wet 4/5
Flammability AS/NZS 1530.3 - 1999	
Ignitability (0-20)	15
Spread of Flame (0-10)	0
Heat Involved (0-10)	0
Smoke Developed (0-10)	4
Oekotex Standard 100	24001568 CENTEXBEL
Quality Management System ISO9001	No

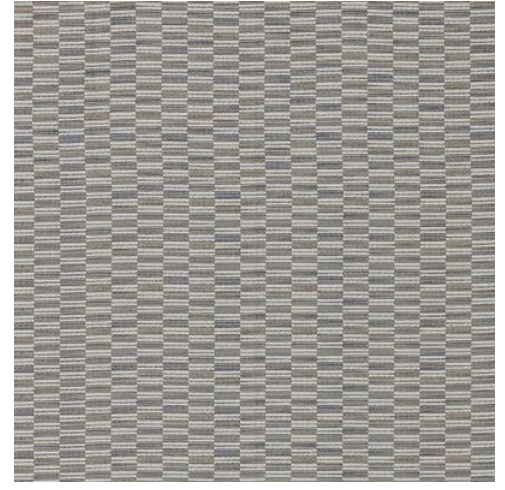
Avela



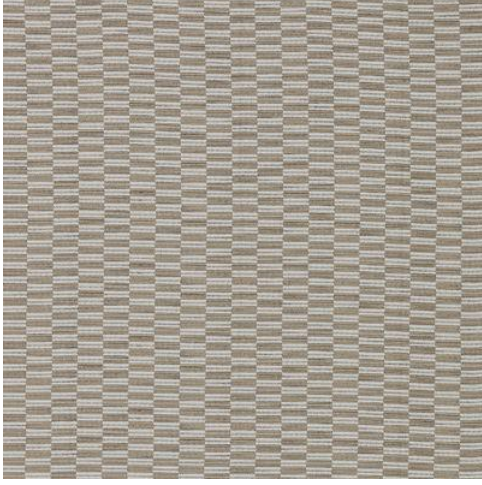
Coral



Moss



Navy



Sand