



ANNA SPIRO  
TEXTILES





# IMAGINE

Imagine celebrates the ability to dream, invent and envision a whole new world of decoration. Through colourful patterns that play together and evoke a feeling of joy, we can explore a fantastical world where anything is possible. With confidence and bravery always at the forefront of what we do, we encourage you to break free from the confines of ordinary and embrace the freedom of extraordinary.

Featuring 9 patterns in various colourways in both fabric and wallpaper, this collection is our largest yet. We have used a mix of hand-screen printing and digital printing for the fabrics to create a diverse range of patterns and colours. Also launching is our very first plain upholstery weight fabric. Pixie Plain is a woven fabric made using recycled fibres and works back with all our collections.

We encourage you to push your imagination to new heights to create extraordinary rooms using our exciting new fabrics and wallpapers.





★

EXPLORE A FANTASTICAL WORLD  
WHERE ANYTHING IS POSSIBLE  
EMBRACE THE EXTRAORDINARY

★

★





We have long admired our friend Greer Clarke for her effortlessly cool, simple and enduring style. Greer is currently studying law at Oxford University in the UK and is soon to marry her lifelong love and our dear friend, super talented Designer and Photographer Tim Salisbury. Greer features in many of Tim's photographs and we have included our very favourite piece in some of the rooms we have created using our new collection of fabrics. We asked Greer to give us her thoughts on style and what she thinks about our new collection.

**Name:** Greer Clarke  
**Occupation:** Studying Law at Oxford University  
**Place of Residence:** Oxford, UK  
**Nationality:** Australia  
**Partner/Husband/Fiance:** Tim Salisbury

**How would you describe your personal style?** Practical, enduring, fun.

**When did you first become aware of your personal style?** When I outgrew my older sister, and therefore also her hand-me-downs. I then got to choose for myself and it was very different.

**What is your idea of a perfect day?** A crisp winter day with a brilliant blue sky and no wind.

**What do you think the relationship is between your personal style and interior style?** I think both have such an important practical role to play, not just in a utilitarian sense but by making me feel happy comfortable and inspired. Bright windows, pretty old plates, good trousers for cycling... those things.

**If you could foresee your future in 5 years, what would you like to see?** Me, Tim and our dog Fred in a place with a garden, a steadily growing Library and lots of weekends away to strange or new places.

**What is on your bedside table right now?** A warm lamp, my ring box, an old library copy of the Hobbit, and NOT my phone (an achievement)!

**What does paradise mean to you?** Somewhere without clocks, watches or any sense of time and a body of water nearby.

**Does your style forever change, or have you found a particular style you gravitate towards?** I hope my style forever changes. I recently realised my "capsule wardrobe" was a bit too effective and I had been wearing the same stuff for years. I'd like to be open to new style.

**Heels or flats?** Flats!

**Name some of your favourite stores -** Objects of Use, TOAST.

**What is your favourite city in the world?** Buenos Aires had a lot going on - I loved it.

**Is there a particular Designer that you adore?** Rosie Assoulin - her designs are so fun and not a single collection has dated.

**Favourite Art Gallery?** Louisiana Museum of Modern Art, outside Copenhagen.

**Favourite Artist?** Emily Kame Kngwarreye, after the great NGA exhibition.

**Favourite Food and restaurant?** Scones with raspberry jam at Vaults & Garden.

**If you had one day to do anything you wanted anywhere in the world, what would you do?** Stay at any remote Landmark Trust with Tim and Fred, and a lot of good food.

**What do you love about Anna's new fabric and wallpaper collection? Do you have any favourite patterns?** I love that each pattern brings so much brightness inside. They conquer bad weather, tricky lighting and awkward spaces. I especially love the Elsternwick Fig pattern in any and every colour. It feels so lush, verdant and Australian. Also, in a purely tactile sense, the fabric feels so wonderful and luxurious.









GLADIOLUS - BLUE  
GLAD-1



GLADIOLUS - TAUPE  
GLAD-2

FABRIC		WALLPAPER	
Composition:	100% Linen	Colourways:	2 Available
Printed Width:	135cm	Roll dimensions:	61.5cm x 10m
Colourways:	2 Available	Pattern repeat:	Half-drop W: 61.5 x H: 62.04cm
Repeat:	1/2 drop	Pattern match:	Straight match
Horizontal Rpt:	61.5cm	Finish:	Pre-trimmed – butt join.
Vertical Rpt:	62.04cm		





GLOWING GROVE - FIESTA  
GG1

#### FABRIC

Composition: 100% Linen  
Printed Width: 135cm  
Colourways: 1 Available  
Horizontal Rpt: 61.5cm  
Vertical Rpt: 40.13cm

#### WALLPAPER

Colourways: 1 Available  
Roll dimensions: 61.5cm x 40m  
Pattern repeat: W: 61.5 x H: 40.13cm  
Pattern match: Straight match  
Finish: Pre-trimmed – butt join.



















PALOMA - BLUE ON BLUE  
PAL-1



PALOMA - BLUE ON RED  
PAL-2



PALOMA - FOREST  
PAL-3



PALOMA - ORANGE  
PAL-4



PALOMA - ZEST  
PAL-5



PALOMA - PLUM ON BLUE  
PAL-6



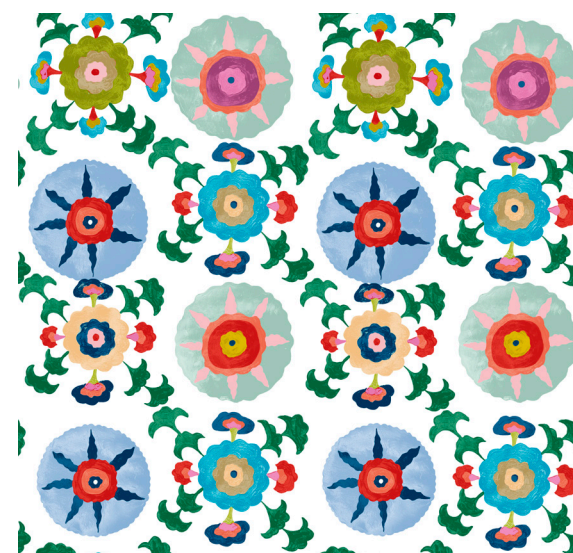
PALOMA - SEA FOAM  
PAL-7

FABRIC		WALLPAPER	
Composition:	100% Linen	Colourways:	4 Available
Printed Width:	135cm	Roll dimensions:	61.5cm x 40m
Colourways:	7 Available	Pattern repeat:	W: 10.25 x H: 10.25 cm
Horizontal Rpt:	10.25cm	Pattern match:	Straight match
Vertical Rpt:	10.25cm	Finish:	Pre-trimmed – butt join.









IZMIR - IVORY  
IZMIR-1



IZMIR - ORANGE  
IZMIR-2



IZMIR - NAVY  
IZMIR-3



IZMIR - MIDNIGHT  
IZMIR-4

#### FABRIC

Composition:	100% Linen
Printed Width:	135cm
Colourways:	4 Available
Horizontal Rpt:	61.5cm
Vertical Rpt:	59.98cm

#### WALLPAPER

Colourways:	4 Available
Roll dimensions:	61.5cm x 40m
Pattern repeat:	W: 61.5 x H: 58.98cm
Pattern match:	Straight match
Finish:	Pre-trimmed - butt join.









FEZ - SAND  
FEZ-1



FEZ - TOBACCO  
FEZ-2

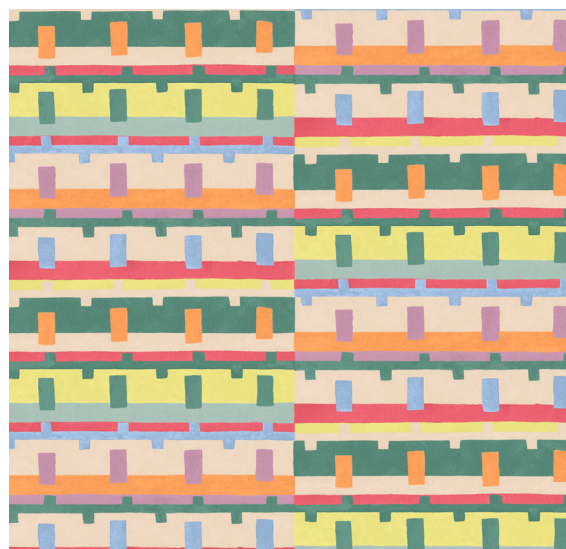
#### FABRIC

Composition:	100% Linen
Printed Width:	135cm
Colourways:	2 Available
Horizontal Rpt:	30.75cm
Vertical Rpt:	54.61cm

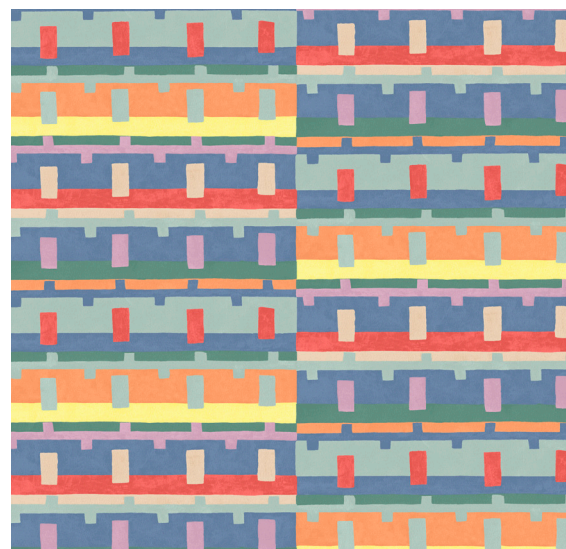
#### WALLPAPER

Colourways:	2 Available
Roll dimensions:	61.5cm x 10m
Pattern repeat:	W: 30.75 x H: 54.61cm
Pattern match:	Straight match
Finish:	Pre-trimmed – butt join.

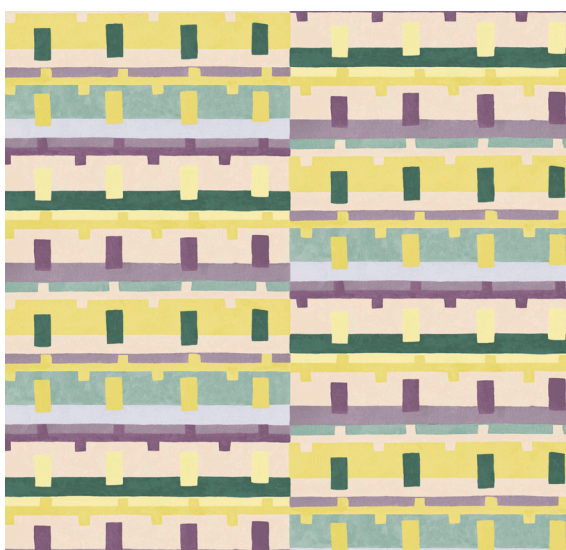




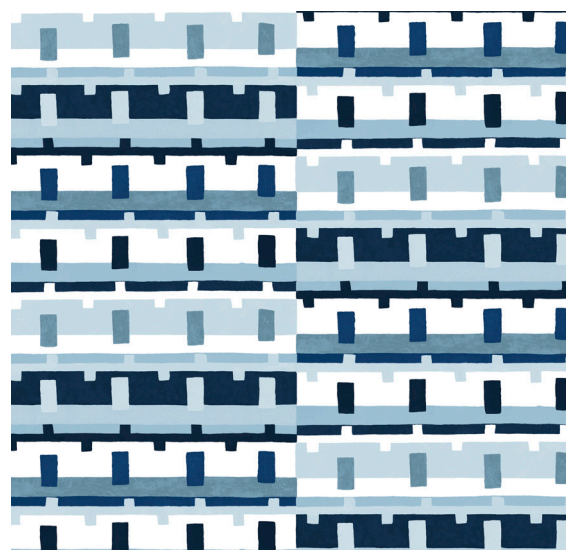
TILDA - FIESTA  
TILDA-1



TILDA-JUBILEE  
TILDA-2



TILDA-GRAPE  
TILDA-3



TILDA-BLUE  
TILDA-4

#### FABRIC

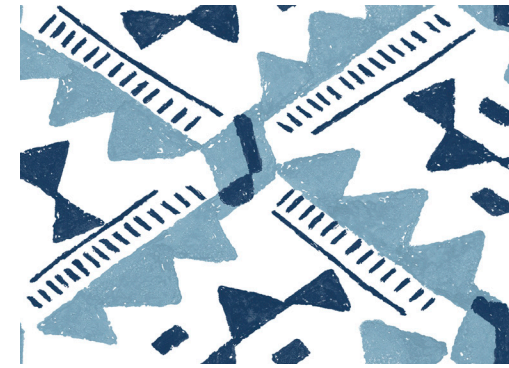
Composition:	100% Linen
Printed Width:	135cm
Colourways:	4 Available
Horizontal Rpt:	61.5cm
Vertical Rpt:	58.76cm

#### WALLPAPER

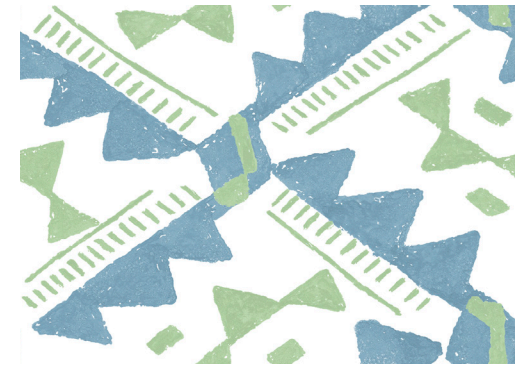
Colourways:	4 Available
Roll dimensions:	61.5cm x 40m
Pattern repeat:	W: 61.5 x H: 58.76cm
Pattern match:	Straight match
Finish:	Pre-trimmed – butt join.



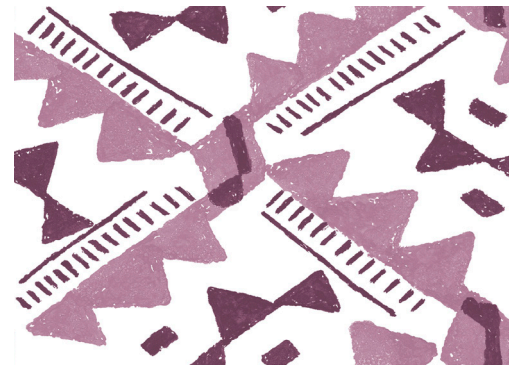




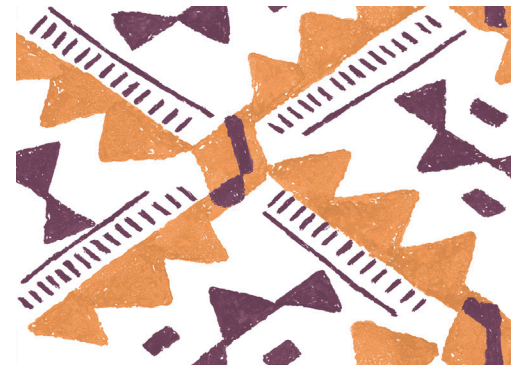
SAFI - BLUE ON BLUE  
SAFI-1



SAFI - GREEN ON BLUE  
SAFI-2



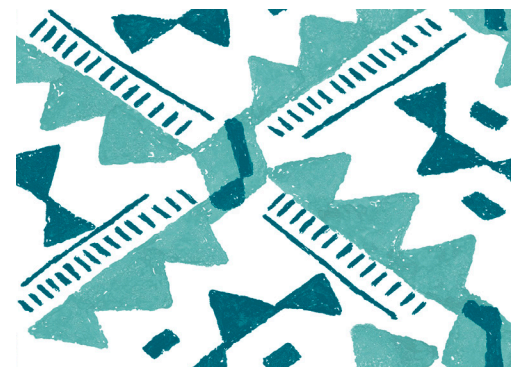
SAFI - PLUM  
SAFI-3



SAFI - PLUM ON ORANGE  
SAFI-3



SAFI - SUNSHINE  
SAFI-5



SAFI - TURQUOISE  
SAFI-6

#### FABRIC

Composition:	100% Linen
Printed Width:	135cm
Colourways:	5 Available
Horizontal Rpt:	12.3cm
Vertical Rpt:	8.78cm

#### WALLPAPER

Colourways:	6 Available
Roll dimensions:	61.5cm x 40m
Pattern repeat:	W: 12.3 x H: 8.78cm
Pattern match:	Straight match





HAZEL - AUTUMN  
HAZ-1



HAZEL - SPRING  
HAZ-2

#### FABRIC

Composition:	100% Linen
Printed Width:	135cm
Colourways:	2 Available
Repeat:	Half-drop
Horizontal Rpt:	61.5cm
Vertical Rpt:	69.97cm

#### WALLPAPER

Colourways:	2 Available
Roll dimensions:	61.5cm x 10m
Pattern repeat:	Half-drop W:61.5 x H:69.97cm
Pattern match:	Straight match
Finish:	Pre-trimmed – butt join.











ELSTERNWICK FIG - DUSTY ROSE  
FIG-1



ELSTERNWICK FIG - KILTA GREEN  
FIG-2



ELSTERNWICK FIG - CHINA BLUE  
FIG-3



ELSTERNWICK FIG - YELLOW  
FIG-4

#### FABRIC

Composition:	100% Linen
Printed Width:	135cm
Colourways:	4 Available
Repeat Size:	Half-drop
Horizontal Rpt:	61.5cm
Vertical Rpt:	39.70cm

#### WALLPAPER

Colourways:	4 Available
Roll dimensions:	61.5cm x 40m
Pattern repeat:	Half-drop: W: 61.5 x H: 39.70cm
Pattern match:	Straight match
Finish:	Pre-trimmed – butt join.







I love that each pattern brings so much brightness inside.  
They conquer bad weather, mucky lighting, awkward spaces

I especially love the Elsternwick Fig pattern,  
in any or every colour

It feels so lush, verdant and Australian

Also in a purely tactile sense it  
the fabric feels so wonderful and luxurious







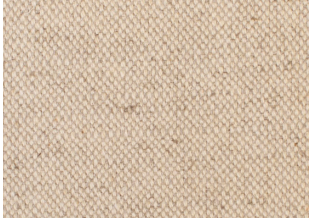




PIXIE PLAIN  
CLOTTED CREAM



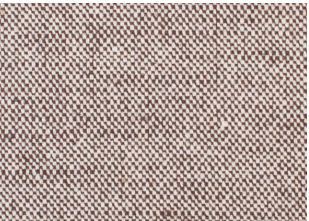
PIXIE PLAIN  
LATTE



PIXIE PLAIN  
RUBBLE



PIXIE PLAIN  
PEPPER



PIXIE PLAIN  
MILK CHOCOLATE



PIXIE PLAIN  
RATTAN



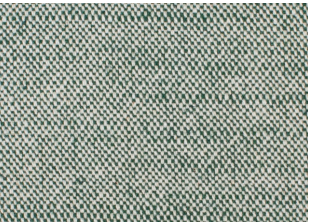
PIXIE PLAIN  
TURMERIC



PIXIE PLAIN  
OLIVE



PIXIE PLAIN  
GRASS



PIXIE PLAIN  
PINE



PIXIE PLAIN  
SEAWEED



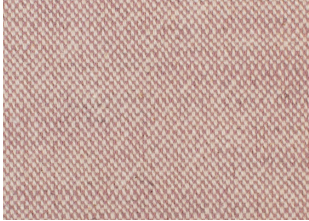
PIXIE PLAIN  
DENIM



PIXIE PLAIN  
PERIWINKLE



PIXIE PLAIN  
ICE



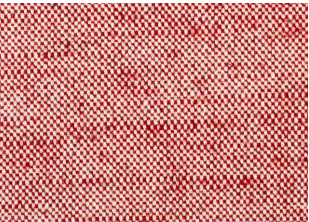
PIXIE PLAIN  
VOODOO



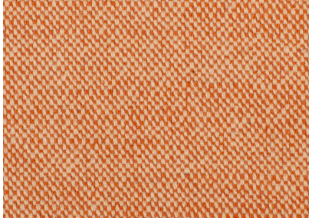
PIXIE PLAIN  
PIGGY



PIXIE PLAIN  
FLOSS



PIXIE PLAIN  
PING



PIXIE PLAIN  
GUSTO

Composition: 50% Recycled Cotton, 35% Viscose and 15% Linen

Fabric Width: 130cm

Colourways: 16 Available

The cotton yarn we use is made out of reusable waste fibers from the spinning mill to give it a new life. By using the spinning waste they obtain a new yarn. An efficient process transforms this fiber to a perfectly usable yarn that can be used to home furnishing and fashion. 1 kg of this yarn can save up to 13.50 liters of water and reduce significantly cotton crops hand use and improve actively our carbon footprint.





THE BOBBY LAMP  
WITH RATTAN SHADE

Dia: 15.5cm x H:44cm



THE BETTY  
LAMP WITH SHADE

Base: H: 65cm x Dia: 20cm



THE HARRY  
SIDE TABLE

Dia: 80cm x H: 70cm



THE FRED MIRROR

W: 130cm x H: 106cm



THE ISADORA LAMP

H: 70cm x D:12cm x W: 12cm



THE CLEO RATTAN TABLE

Dia: 90cm x H: 70cm

ANNA SPIRO FURNITURE AVAILABLE AT  
[WWW.SPIRO.COM.AU](http://WWW.SPIRO.COM.AU)







ANNA SPIRO  
TEXTILES