

WARWICK SUNDEC®

Insure against the
outdoor elements
with SUNDEC.



WARWICK SUNDEC®

SUNDEC, the perfect fabric for all outdoor applications.

Whether in the garden, by the pool, on a boat, entertainment deck or an outdoor cafe, SUNDEC is designed to create a beautifully coordinating environment that can be effortlessly maintained no matter the conditions.

SUNDEC is a lightfast, durable and easy to clean partner for all year round indoor and outdoor decorative applications.

Developed to withstand commercial sunlight exposure requirements, mould and mildew growth, chlorine damage and general wear and tear.

If that's not enough, Warwick's SUNDEC includes water repellency and microbial hygiene protection making stylish outdoor living easier.

Front cover image:

Sofa: Noosa Turquoise

Scatter cushions Left-Right: Coolum Turquoise, Mallaoota Sunshine, Mallaoota Stone, Merimbula Sunshine, Noosa Stone, Merimbula Turquoise, Coolum Sunshine

Umbrella: Coolum Sunshine

Page 4 image:

Sunbeds Top-Bottom: Bondi Ocean with Bondi Calippo scatter cushion, Bells Beach Calippo with Bondi Ocean and Mindill Calippo scatter cushions, Bells Beach Ocean with Bondi Calippo scatter cushion

Ottomans Top-Bottom: Mindill Calippo (sides), Kona Calippo (Top) with Kona Ash piping, Waikiki Calippo (sides), Kona Calippo (Top) with Kona Ash piping.





What is SUNDEC?

Ultra Violet Resistant

SUNDEC fabrics have excellent ultraviolet blocking agents which protect the polymer backbone of the fabric from the effects of UV radiation. SUNDEC fabrics have been tested for weathering, such as sun, rain and humidity, obtaining the UV Standard 801 certificate, 'Protect 80', meaning it is capable of blocking more than 97% UV rays.

Stain resistance

SUNDEC fabrics have been carefully processed and treated to reduce the fabric absorption of soil and stains.

Water repellent

SUNDEC fabrics are protected by an invisible shield around each fibre to keep the fabric dry and clean. It is a natural anti-adherent.

Oeko-Tex certified

Oeko-Tex is the internationally standardised criteria directory for testing harmful substances, issued by the International Association for Research and Testing in the Field of Textile Ecology (Oeko-Tex). SUNDEC fabrics have met their rigorous international testing standards and are free of substances which might be harmful to humans and the environment.

Cleanability

Due to the fabrics being woven with solution dyed olefin yarns, the fabrics can be safely cleaned. We recommend the use of reticulated foam, which is a porous low density foam, allowing water and air to flow through easily.

Versatile

SUNDEC fabrics are suitable for both indoor and outdoor use, as well as both upholstery and drapery applications. Offered in a variety of designs and colours to suit your home.

Halo

SUNDEC fabrics are a part of our Halo range, meaning they are easy to clean, hard wearing and, put simply, built to last. Woven to precise specifications and tested to exacting standards for colourfastness, abrasion, safety in fabrics and inherent stain resistance. Additionally, Halo fabrics are resistant to pilling and mould/mildew while impervious to attack by moths, silverfish and insect pests.

Environmentally Considered

All SUNDEC fabrics are woven from 100% solution dyed olefin yarn. Solution dyeing uses a clean manufacturing process, as the colour is added before the yarn is extruded. No dye bath processes are used, eliminating waste effluents. It is also 100% recyclable.

Colour and Scale

Please note the flat shots in this brochure are intended as a visual representation only. All designs are not 100% in scale and should be looked at in conjunction with the pattern repeat figures on pages 24-25. It is recommended that a cutting be requested for colour and scale prior to any placement of orders.



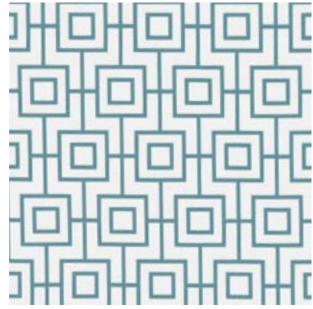
Coolum Turquoise



Coolum Turquoise
(Reverse)



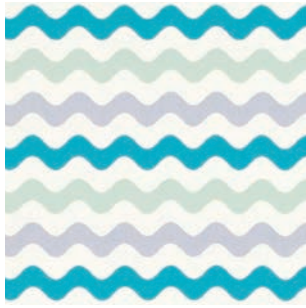
Bondi Ocean



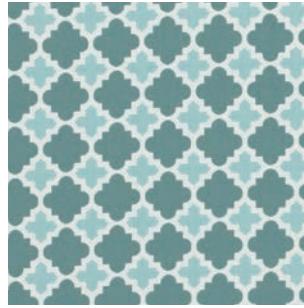
Bondi Ocean (Reverse)



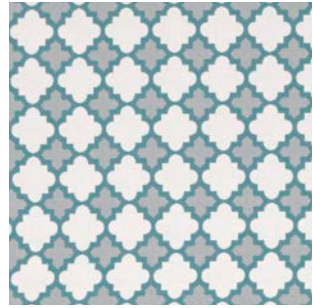
Avoca Turquoise



Merimbula Turquoise



Bells Beach Ocean



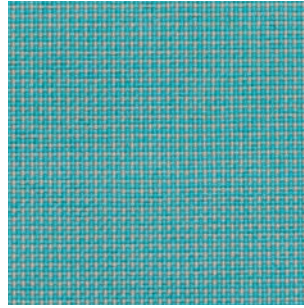
Bells Beach Ocean
(Reverse)



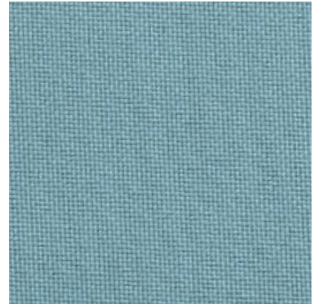
Mallacoota Turquoise



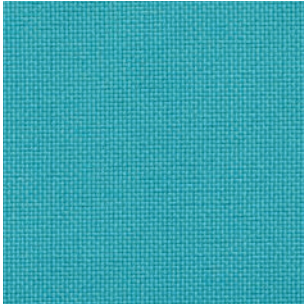
Waikiki Turquoise



Noosa Turquoise



Kona Ocean



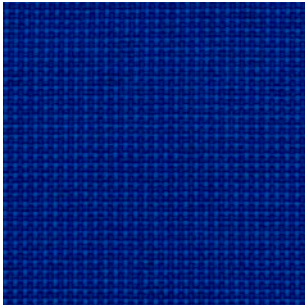
KonaTurquoise



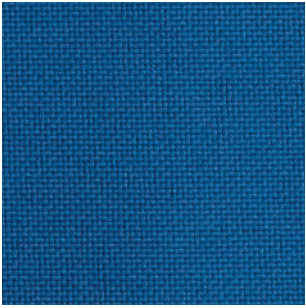
Coolum Marine



Coolum Marine (Reverse)



Noosa Marine



Kona Lagoon



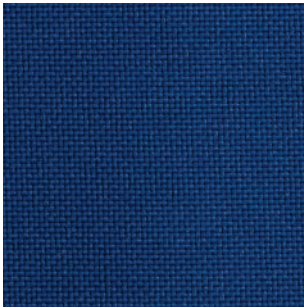
Avoca Marine



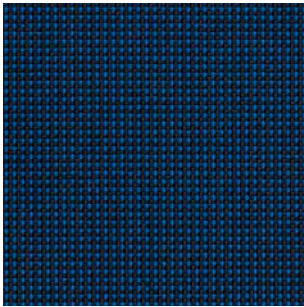
Merimbula Marine



Mallacoota Marine



Kona Marine



Noosa Navy



Kona Navy



Coolum Lime



Coolum Lime (Reverse)



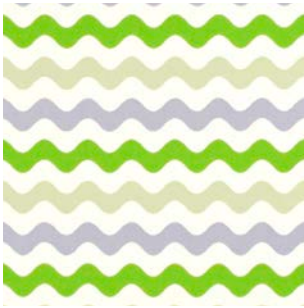
Bondi Lime



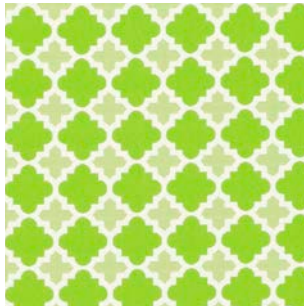
Bondi Lime (Reverse)



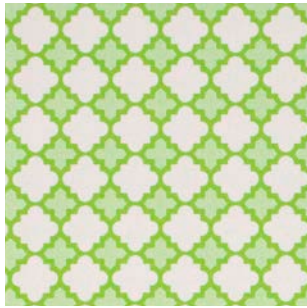
Avoca Lime



Merimbula Lime



Bells Beach Lime



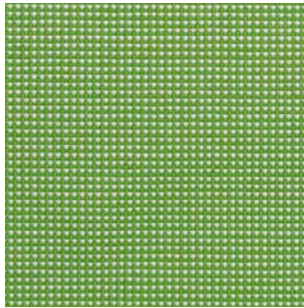
Bells Beach Lime
(Reverse)



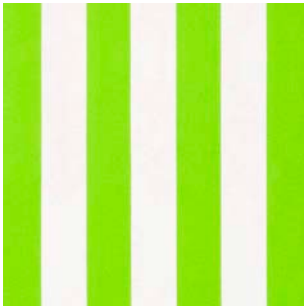
Waikiki Lime



Mindill Lime



Noosa Lime



Mallacoota Lime



Kona Lime



Coolum Sunshine



Coolum Sunshine
(Reverse)



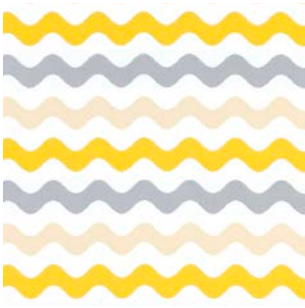
Bondi Sunshine



Bondi Sunshine (Reverse)



Avoca Sunshine



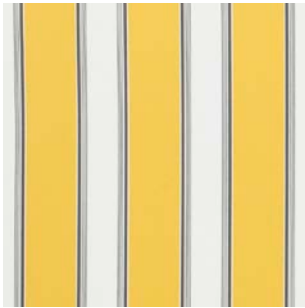
Merimbula Sunshine



Bells Beach Sunshine



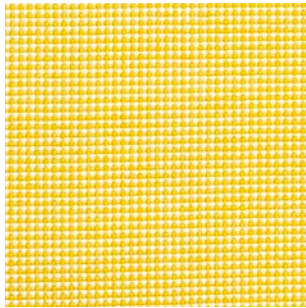
Bells Beach Sunshine
(Reverse)



Waikiki Sunshine



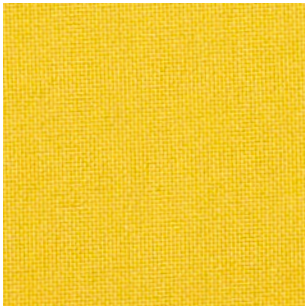
Mindill Sunshine



Noosa Sunshine



Mallacoota Sunshine



Kona Sunshine



Coolum Melon



Coolum Melon (Reverse)



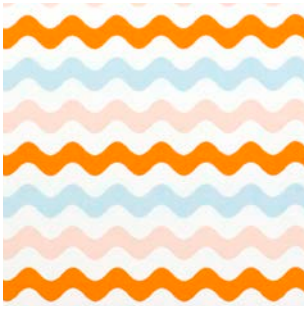
Bondi Calippo



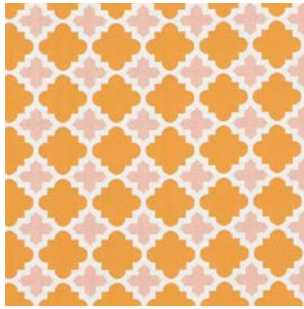
Bondi Calippo (Reverse)



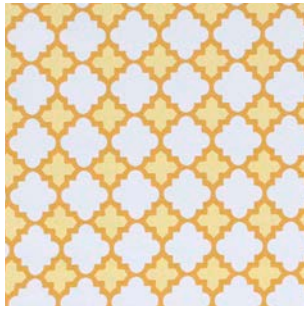
Avoca Melon



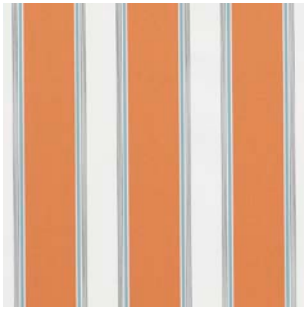
Merimbula Melon



Bells Beach Calippo



Bells Beach Calippo
(Reverse)



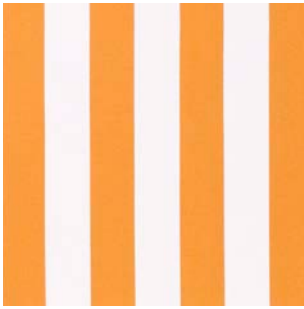
Waikiki Calippo



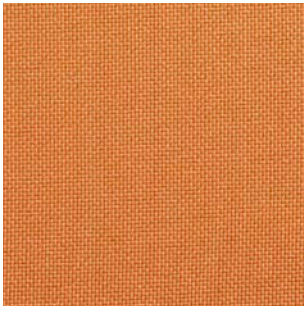
Mindill Calippo



Noosa Melon



Mallacoota Melon



Kona Calippo



Coolum Lobster



Coolum Lobster (Reverse)



Bondi Hibiscus



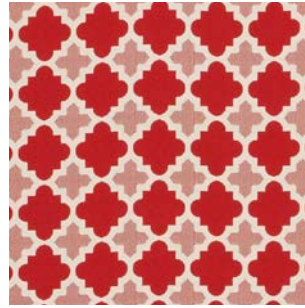
Bondi Hibiscus (Reverse)



Avoca Lobster



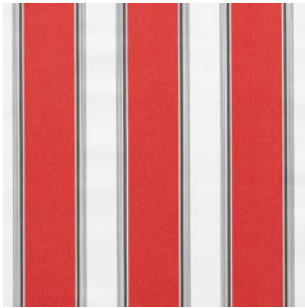
Merimbula Lobster



Bells Beach Hibiscus



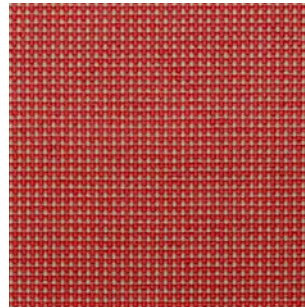
Bells Beach Hibiscus (Reverse)



Waikiki Hibiscus



Mindill Hibiscus



Noosa Lobster



Mallacoota Lobster



Kona Hibiscus



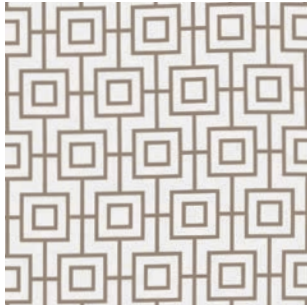
Coolum Stone



Coolum Stone (Reverse)



Bondi Stone



Bondi Stone (Reverse)



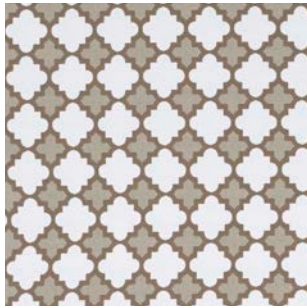
Avoca Stone



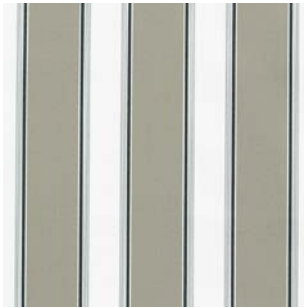
Merimbula Stone



Bells Beach Stone



Bells Beach Stone
(Reverse)



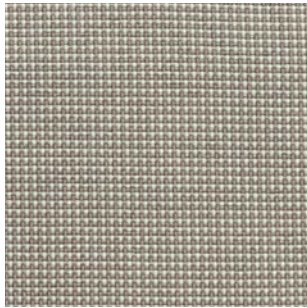
Waikiki Stone



Mindill Stone



Kona Stone



Noosa Stone



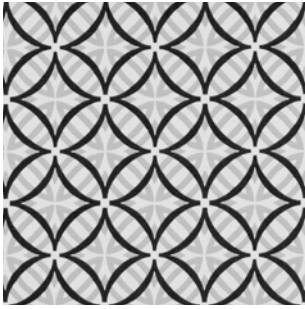
Mallacoota Stone



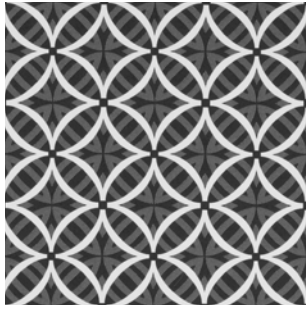
Kona Sand



Kona Tan



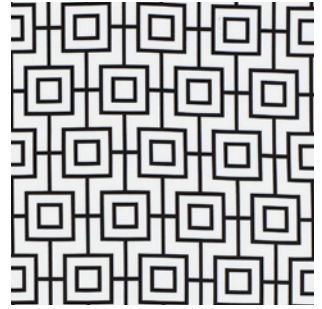
Coolum Ash



Coolum Ash (Reverse)



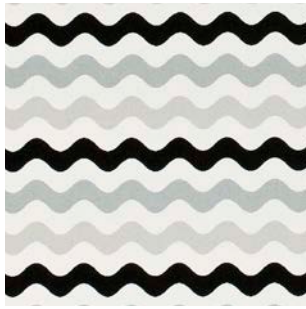
Bondi Ash



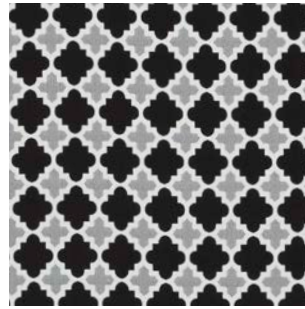
Bondi Ash (Reverse)



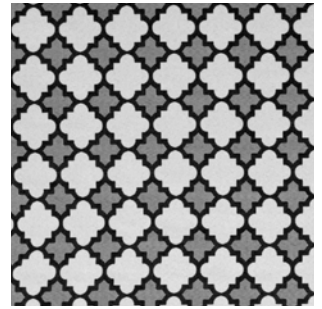
Avoca Ash



Merimbula Ash



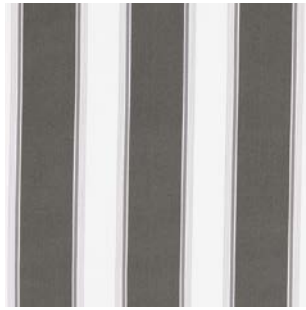
Bells Beach Ash



Bells Beach Ash (Reverse)



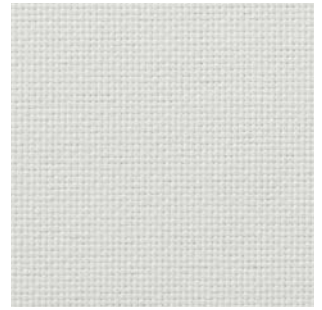
Waikiki Ash



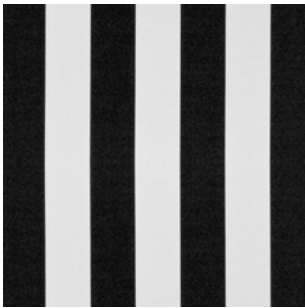
Waikiki Pebble



Kona Ash



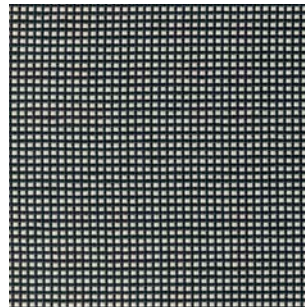
Kona Cloud



Mallacoota Ash



Kona Pebble



Noosa Ash



Noosa Natural



Chairs: Mallacoota Lime

Scatter cushions Left-Right: Avoca Turquoise, Merimbula Stone, Merimbula Stone, Coolum Turquoise, Kona Turquoise, Avoca Stone

Scatter cushions on ground: Merimbula Turquoise, Coolum Stone

Test Results

Specifications	Avoca	Bells Beach	Bondi	Coolum	Kona
Brand	Sundec	Sundec	Sundec	Sundec	Sundec
Composition	100% Olefin	100% Olefin	100% Olefin	100% Olefin	100% Olefin
Pattern Repeat (cm)	H: 17.5 x V: 24	H: 7 x V: 7	H: 11.5 x V: 19	H: 17.5 x V: 17.5	Plain
Railroaded	No	No	Yes	Multi	No
Width (cm)	140	140	140	140	140
Weight (gsm)	310	310	310	310	290
Origin	Non EU	Non EU	Non EU	Non EU	Non EU
Stain repellent	Fluro Chem	Fluro Chem	Fluro Chem	Fluro Chem	Fluro Chem
Durability					
Martindale (ISO 12947)	15,000 - 20,000	15,000 - 20,000	15,000 - 20,000	15,000 - 20,000	20,000 - 40,000
Usage	General Domestic	General Domestic	General Domestic	General Domestic	Heavy Dom / Gen Comm
Colourfastness					
To Light - Xenon Arc (ISO 105-B02)	>6	>6	>6	>6	>6
To Rubbing (ISO 105-X12)	Dry 4/5, Wet 4/5	Dry 4/5, Wet 4/5	Dry 4/5, Wet 4/5	Dry 4/5, Wet 4/5	Dry 5, Wet 5
To Shampoo (AS2111.19.2)	5	5	5	5	5
To Perspiration (ISO 105-E04)	5	5	5	5	5
To Water (ISO 105-E01)	5	5	5	5	5
To Dry Cleaning Solvent (ISO 105-D01:1993)	5	5	5	5	5
To Washing (ISO 105-C06,B1S)	5	5	5	5	5
To Seawater (ISO 105-E02:1994)	5	5	5	5	5
To Chlorinated water (ISO 105-E03:1994, 5mg/L)	5	5	5	5	5
Resistance to Mildew					
Resistance to Mildew (AATCC 30, Test III)	No fungal growth observed. Zone of inhibition: 44mm. Antifungal activity observed.				
Pilling					
Pilling (ISO 12945.2)	5	5	5	5	5
Seamslippage (ISO 13936.2)					
Warp	3.0	3.0	3.0	3.0	2.6
Weft	2.8	2.8	2.8	2.8	2.8
Dimensional chg launder (AS5077/ISO6330.7BA)					
Warp	-0.3	-0.3	-0.3	-0.3	-0.3
Weft	-0.2	-0.2	-0.2	-0.2	-0.1
Dimensional change to hanging (AS2663.1B-1997)					
Warp	0	0	0	0	0
Weft	0	0	0	0	0
Free Formaldehyde					
Free Formaldehyde (ISO 14184-1:1998)	Not detectable	Not detectable	Not detectable	Not detectable	Not detectable
Fire Hazard Properties (AS1530.3)					
Ignitability Index	12	12	12	12	12
Spread of Flame Index	0	0	0	0	0
Heat Evolved Index	2	2	2	2	2
Smoke Developed Index	4	4	4	4	4

Mallacoota	Merimbula	Mindill	Noosa	Waikiki	Requirement
Sundec	Sundec	Sundec	Sundec	Sundec	
100% Olefin	100% Olefin	100% Olefin	100% Olefin	100% Olefin	
H: Stripe x V: 13	H: 6 x V: 16.5	H16.5 x V Stripe	Plain	H16.5 x V Stripe	
Yes	No	No	Multi	No	
140	140	150	140	150	
310	310	240	268	240	
Non EU	Non EU	Non EU	Non EU	Non EU	
Fluro Chem	Fluro Chem	Fluro Chem	Fluro Chem	Fluro Chem	
15,000 - 20,000	15,000 - 20,000	15,000 - 20,000	15,000 - 20,000	15,000 - 20,000	15,000-20,000
General Domestic	General Domestic	General Domestic	General Domestic	General Domestic	
>6	>6	>6	>6	>6	Minimum 5
Dry 4/5, Wet 4/5	Dry 4/5, Wet 4/5	Dry 4/5, Wet 4/5	Dry 4, Wet 4	Dry 4/5, Wet 4/5	Minimum Dry 4, Wet 4
5	5	5	5	5	Minimum 4
5	5	5	5	5	Minimum 4
5	5	5	5	5	Minimum 4
5	5	5	5	5	Minimum 4
5	5	5	5	5	
5	5	5	5	5	
No fungal growth observed. Zone of inhibition: 44mm. Antifungal activity observed.					
5	5	5	5	5	Minimum 3/4
3.0	3.0	3.0	4.0	3.0	Under 6
2.8	2.8	2.8	3.6	2.8	Under 6
-0.3	-0.3	-0.3	0	-0.3	Maximum 5(+/-)
-0.2	-0.2	-0.2	0	-0.2	Maximum 5(+/-)
0	0	0	0	0	Maximum 2(+/-)
0	0	0	0	0	Maximum 2(+/-)
Not detectable	Not detectable	Not detectable	Not detectable	Not detectable	Under 100ug/g
12	12	12	12	12	Range 0-20
0	0	0	0	0	Range 0-10
2	2	2	2	2	Range 0-10
4	4	4	4	4	Range 0-10

Care information

Regular Care

- Store away from direct sunlight when not in use.
- Vacuum regularly using low suction.
- Rotate reversible cushions regularly.

Cleaning

Do not remove cushion covers for separate cleaning even though they have zippers. Clean with hot-water extraction machine (hot). Professional cleaning recommended. Use only upholstery detergent. Do not wet filling. Dry in shade away from direct heat and sunlight. Allow to dry thoroughly before re-use.

or

May be shampoo cleaned using upholstery shampoo only. Do not use dishwashing or laundry detergents. Do not wet filling. Do not scrub with stiff brush. Dry in shade away from direct heat and sunlight. Allow to dry thoroughly before re-use.

Spot Cleaning

Treat spills and stains as soon as possible. Gently scrape soil or mop liquid from the surface of the fabric. Do not scrub. Apply proprietary cleaning agents strictly according to instructions to remove the residue of the spill. Do not saturate the fabric or interior with water or other cleaning liquids. May be spot cleaned with dry cleaning solvent.

WARWICK

Guarantee

Since 1966 Warwick have supplied fine furnishing fabrics which have been quality tested to world standards for performance, durability and safety.

For a period of three years, for both domestic and commercial applications, we guarantee to replace any fabric which is found to be faulty as a result of manufacturing defect and which has been used in accordance with our performance ratings and care instructions.

The Warwick Quality Guarantee is additional to all statutory rights and remedies that are available to our customers under Australian Consumer Law.

In the event of any fabric claim Warwick customers will be provided with a comprehensive service form to be completed and returned to Warwick to facilitate prompt processing.

Full terms and conditions of the Warwick Quality Guarantee are available upon request. Please email info@warwick.com.au or fax 03 9416 1060.

Australia

T 1300 787 888
[toll free in Australia]
F +61 (0) 3 9415 7236
F +61 (0) 3 9416 1060
info@warwick.com.au
www.warwick.com.au

New Zealand

T +64 (0) 9 477 3080
F +64 (0) 9 479 6313
info@warwick.co.nz
www.warwick.co.nz

United Kingdom

T +44 (0) 1451 822 383
F +44 (0) 1451 822 369
info@warwick.co.uk
www.warwick.co.uk

