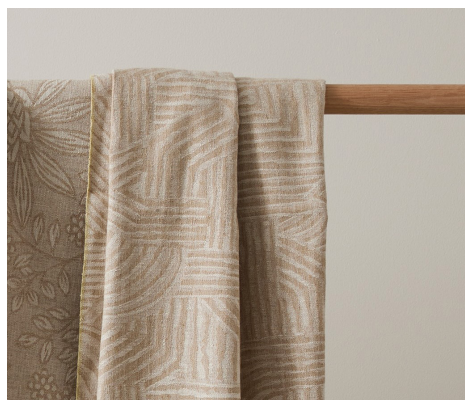


WARWICK



RELAX IN A RUSTIC OASIS WITH RAW, TEXTURED PATTERN – ZAYN by Warwick

Reside in the beauty of an oasis with ZAYN. Influenced by Middle Eastern beauty, ZAYN is a contemporary collection of patterned fabrics that are dual-purpose and ideal for creating relaxed furnishings with a raw, natural feel in both residential and commercial settings.

- **DESIGN:** Contemporary with a linen-look, ZAYN features four timeless patterns that will sit effortlessly in rustic and casual spaces. Yarn dyed and reversible, ZAYN is jacquard woven and embodies a dry, textured finish for an organic style. In this collection, AIREN, a worldly geometric; XAVIER, a contemporary leaf; LAYLA, a stylised botanical; and ZAYN, a classic floral.
- **APPLICATION:** Heavy Commercial and certified for quality management system ISO9001, ZAYN is perfect for bringing a raw and relaxed feel to both residential and commercial interiors. Dual-purpose and washable, ZAYN's versatility and simplistic nature makes this collection ideal for creating drapery and Roman blinds, as well as upholstering casual sofas, cushions and lampshades, introducing an oasis-like style.
- **COLOURWAYS:** In one colourway, ZAYN offers a warm neutral tone that is simple and adaptable to a range of interiors. Inspired by the tones found in sand, Linen complements the overall aesthetic of the collection with its raw, natural finish and dry linen-look.
- **RATING:** Certified for quality management system ISO9001 and Heavy Commercial, ZAYN is a reversible and washable dual-purpose collection that is suitable for commercial and residential applications. Classic yet contemporary, ZAYN's timeless designs and neutral colourway make this range ideal for bringing a simple, yet casual feel.



SPECIFICATIONS			FR AS 1530.3 INDEX RESULTS			
DESIGN	USAGE	COMPOSITION	IGNITABILITY	SPREAD OF FLAME	HEAT EVOLVED	SMOKE DEVELOPED
AIREN	Drapery / Heavy Commercial 40,000 Martindale	84% Polyester, 16% Cotton	13	9	4	7
LAYLA	Drapery / Heavy Commercial 40,000 Martindale	84% Polyester, 16% Cotton	13	9	4	7
XAVIER	Drapery / Heavy Commercial 40,000 Martindale	84% Polyester, 16% Cotton	13	9	4	7
ZAYN	Drapery / Heavy Commercial 40,000 Martindale	84% Polyester, 16% Cotton	13	9	4	7

For more information
about Warwick Fabrics call

New Zealand
+64 (0) 9 477 3080
www.warwick.co.nz

