

WARWICK Elton



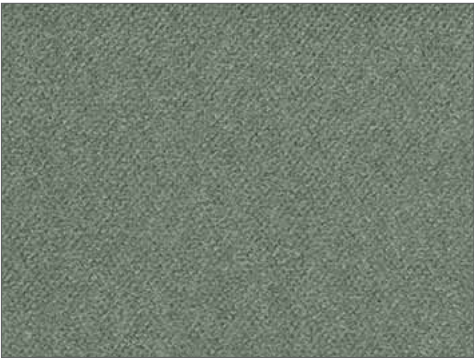
Honeycomb



Moss



Army



Agave



Eucalyptus



Atlantic



Midnight



Ivy



Lake



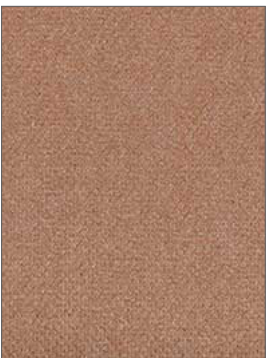
Sapphire



Navy



Musk



Peach



Jarrah



Date



Cranberry



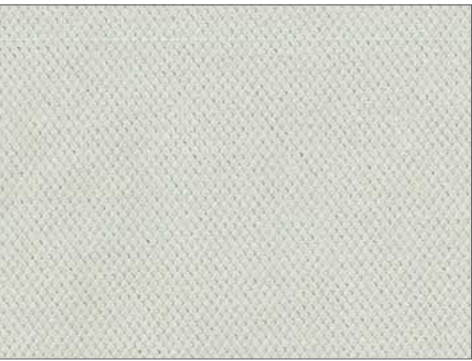
Merlot



Regal

WARWICK

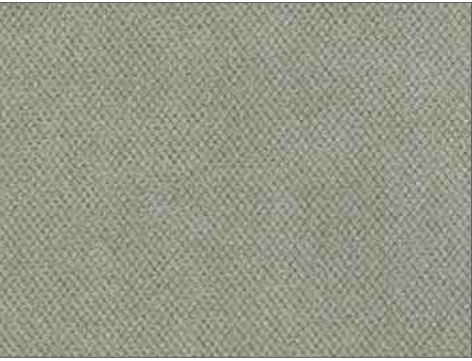
Elton



Talc



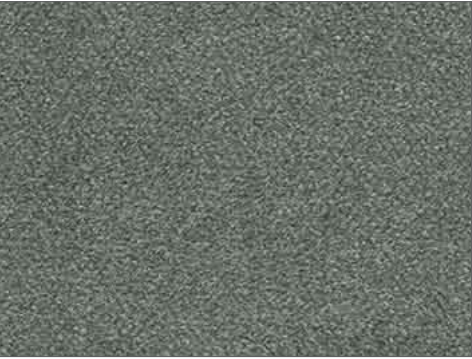
Pearl



Silver



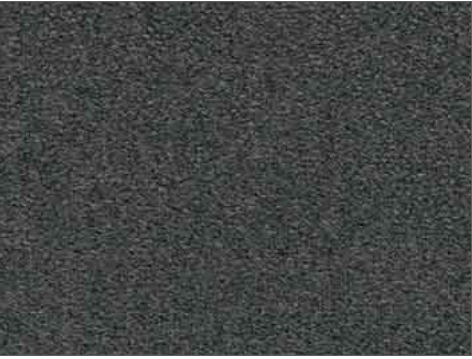
Shell



Graphite



Bark



Carbon



Clove

- Commercial Upholstery
- 70,000 Abrasion
- High Performance Plain
- Halo Easy Clean
- Fire Rated
- Oeko-Tex Certified
- 3 Year Guarantee



WARWICK

Australia
T 1300 787 888
(toll free in Australia)
F +61 (0) 3 9415 7236
F +61 (0) 3 9416 1060
info@warwick.com.au
www.warwick.com.au

New Zealand
T +64 (0) 9 477 3080
F +64 (0) 9 479 6313
info@warwick.co.nz
www.warwick.co.nz

United Kingdom
T +44 (0) 1451 822 383
F +44 (0) 1451 822 369
info@warwick.co.uk
www.warwick.co.uk

| | |
|--------------|---|
| RANGE NAME: | ELTON |
| WIDTH: | 140CM |
| WEIGHT: | 275GSM |
| COMPOSITION: | 100% POLYESTER |
| ABRASION: | 70,000 |
| USAGE: | HEAVY COMMERCIAL |
| FR TESTED? | YES |
| NB: | Presented stock may vary from these samples |

Features

- **Strength and Durability:** Tested for heavy commercial upholstery applications and extended performance and appearance characteristics.
- **Halo Easy Clean:** High-performance, easy clean fabrics that pass the toughest testing. All Warwick Halo fabrics are woven to precise specifications and tested to exacting standards for colourfastness, abrasion, inherent stain resistance and safety.
- **Fire Rated:** Tested to comply with 1530.3.
- **Oeko-Tex:** Tested for harmful substances and found to comply with all required criteria for environmentally friendly production facilities.
- **Customisation:** Our Design Studio is able to develop custom designs and colour for your personalised requirements. Please contact your local representative for further information.
- **Guarantee:** 3 Years. Please see www.warwick.com.au for further information.

Australian and New Zealand Test Standards

Wyzenbeek Rub Test: Heavy Duty Commercial Rating
(ASTM D3597, mesh, 4lb/3lb) Test Report Available on Request

Fire Hazard Properties: AS 1530 Part III Conducted
Test Report Available on Request

Warwick performance standards meet or exceed industry requirements. Please note that test results are intended as a guide and should be considered in conjunction with the fabric usage.

Warwick Fabrics have a commitment to our care of the environment. We request that if these samples are no longer required please contact your local Warwick Fabrics Showroom so that we may recycle them. Thank you.



Adelaide
Brisbane
Canberra
Gold Coast
Melbourne
Perth
Sydney
India
New Zealand
South Africa
UAE
United Kingdom

