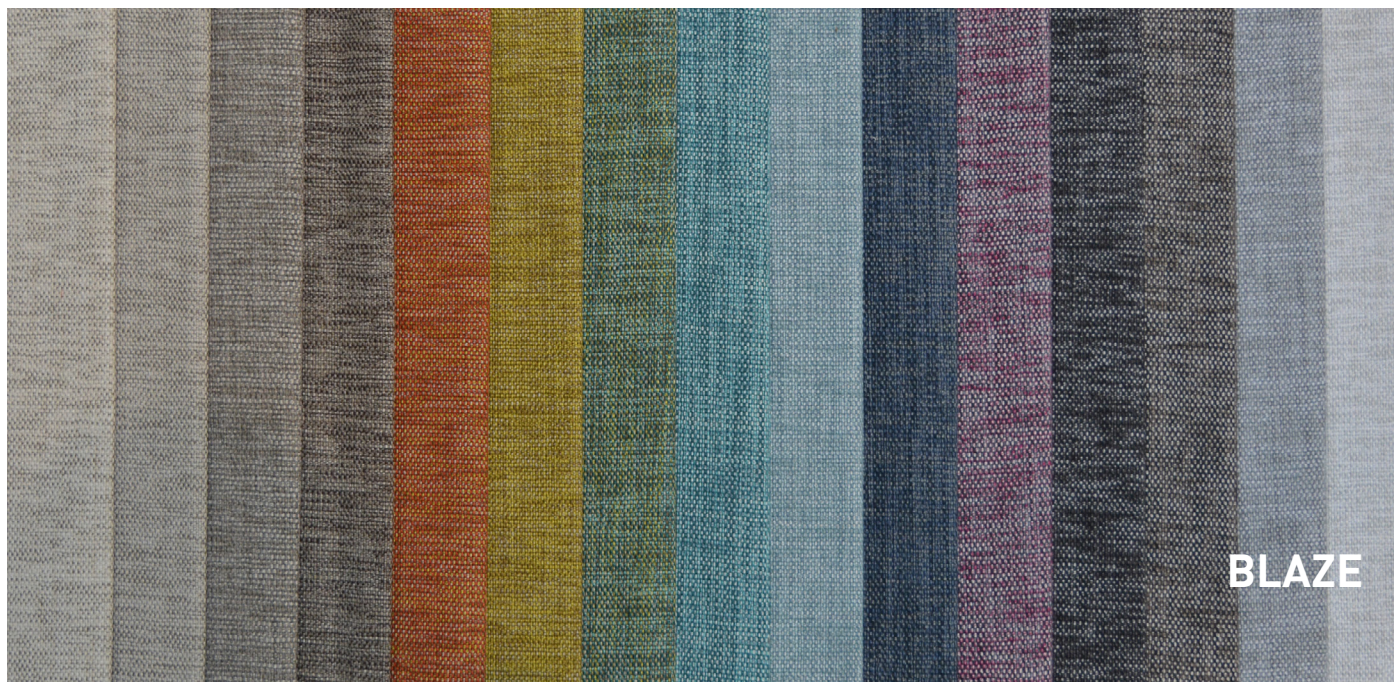


WARWICK



A MODERN TRAILBLAZER – BLAZE by Warwick

BLAZE brings colour, texture and durability to the fore with a stylish range that transcends conventional plains by using tonal variations to enhance intensity. The robust plain gains interest and depth with interwoven, multi-coloured yarns and dry textural qualities to deliver a high performance upholstery solution for today's interiors.

- **DESIGN:** Appealing style and an effortless modern aesthetic underpin a range that takes its cue from bustling urban streets and a modern metropolis.
- **APPLICATION:** BLAZE is at home in any setting, introducing refreshingly modern style and multiple colour options for cushions, lampshades and diverse seating options within commercial and domestic interiors.
- **COLOURWAYS:** A selection of 15 colourways encompass neutrals, trend tones and classics with a twist. Brighten a space with vibrant touches of Chartreuse, Orchid, Turquoise, Jungle and Paprika or balance the expression with subtle neutrals like Linen, Stone, Mink, Steel, Frost and Slate. An accent of powdery Duckegg blue will complement lighter tones of contemporary grey or use timeless classics like Navy, Ash and Pepper as style staples.
- **RATING:** BLAZE meets heavy commercial standards, is FR tested and offers the added protection of a Warwick Halo fabric, tested to exacting standards in colourfastness, abrasion and inherent stain resistance.



For more information about
Warwick Fabrics call

Australia
Toll free 1300 787 888
www.warwick.com.au

New Zealand
+64 (0) 9 477 3080
www.warwick.co.nz

United Kingdom
+44 (0) 1451 822 383
www.warwick.co.uk

SPECIFICATIONS				FR AS 1530.3 INDEX RESULTS			
DESIGN	USAGE	COMPOSITION	COL CODE AUS/NZ	IGNITABILITY	SPREAD OF FLAME	HEAT EVOLVED	SMOKE DEVELOPED
BLAZE	Heavy Comm 93,000 Martindale	100% Polyester	G/G	10	0	2	4

