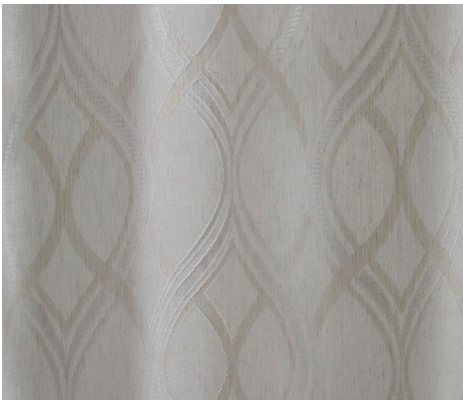


WARWICK



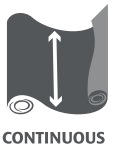
ELEGANT SOPHISTICATION FOR TIMELESS DRAPES - PENINSULA by Warwick

An elegant sheer with enduring opulence, PENINSULA is an ideal drape for sophisticated interiors. With its continuous wide-width and self-weighted quality, PENINSULA can be used in both standard residential and large-scale commercial windows to add gentle light-filtering character to any space. Its classic design adds subtle visual interest that is calming and perpetual – a thoughtful choice for any interior scheme.

- **Design:** Timeless and sophisticated, PENINSULA features a large-scale overlaying ogee design that creates a sense of fluid movement in the pattern. Jacquard woven with an embroidery-look design, PENINSULA's yarn dyed construction creates tonal variation for refined glamour and opulence.
- **Application:** With a generous 310cm continuous, self-weighted wide-width, PENINSULA is a unique light-filtering patterned sheer drape, ideally suited to classically styled residential homes, or large-scale architectural windows in commercial spaces.
- **Colourways:** With seven tonal colourways, PENINSULA's sheer texture will blend effortlessly into new and existing interior schemes alike. Snow and Nougat offer light and airy shades to soften and calm a space. Pumice and Mist are cool and breezy mid-tones, while darker and sophisticated hues are found in Charcoal, Pewter and Truffle.
- **Rating:** Boasting a fire rating with both AS1530.3 and AS1530.2 standards as well as Oeko-tex certification, PENINSULA's self-weighted and continuous wide width make it highly adaptable for use in a vast array of interior spaces, from large-scale commercial to small-scale residential. From traditional elegance to modern sophistication, PENINSULA is a timeless sheer drape with endless options.

SPECIFICATIONS			
DESIGN	USAGE	COMPOSITION	COLOUR CODE
PENINSULA	Drapery	100% Polyester	R5
FR AS/NZS 1530.3		FR AS/NZS 1530.2	
IGNITABILITY	0	FLAMABILITY INDEX	16
SPREAD OF FLAME	0	SPREAD FACTOR	LENGTH: 11 WIDTH: 14
HEAT EVOLVED	0	HEAT FACTOR	LENGTH: 2 WIDTH: 2
SMOKE DEVELOPED	0-1		

For full test details please contact your Warwick Sales Consultant



For more information about
Warwick Fabrics call

Australia
Toll free 1300 787 888
www.warwick.com.au

New Zealand
+64 [0] 9 477 3080
www.warwick.co.nz

United Kingdom
+44 [0] 1451 822 383
www.warwick.co.uk



Warwick Fabrics © 2021 All rights reserved